

SOLUTIONS TABLE TOP



T **514-31ONIVO** (514-316-6486)
info@onivo.ca | www.onivo.ca



T 514-31ONIVO (514-316-6486)
info@onivo.ca | www.onivo.ca

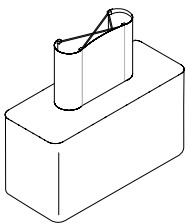
EXPANDING DISPLAY SYSTEMS



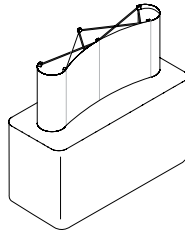
- approx. 20% smaller than standard Coyote tabletops
- entire display rolls up into special storage sleeve which slides into a padded carry case
- kit includes frame, channel bars, panel hangers, carry case, & 2 lights
- add an optional OCS hard case for shipping or extra secure storage

2x2 mini tabletop kit
footprint dimensions:
48"h x 53.625"w x 11.75"d

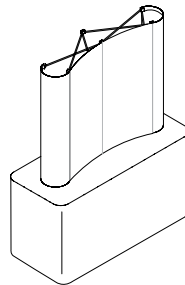
3x2 mini tabletop kit
footprint dimensions:
48"h x 74.625"w x 15.75"d



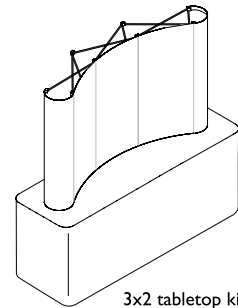
1x1 tabletop
footprint dimensions:
30.625"h x 45.5"w x 12.5"d



2x1 tabletop
footprint dimensions:
30.625"h x 73"w x 19.25"d



2x2 tabletop kit
footprint dimensions:
59.375"h x 73"w x 19.25"d



3x2 tabletop kit
footprint dimensions:
59.375"h x 97.25"w x 25"d

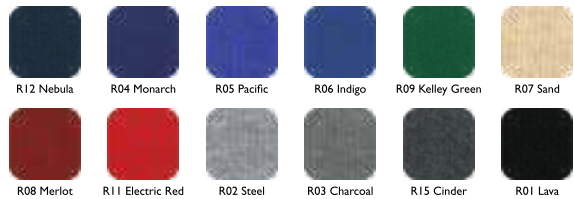
FABRIC CHOICES

popup display systems are available with printed graphic murals or "velcro-friendly" fabric panels of your choice. Actual fabric color may vary slightly.

Regal - smooth exhibit & display fabric



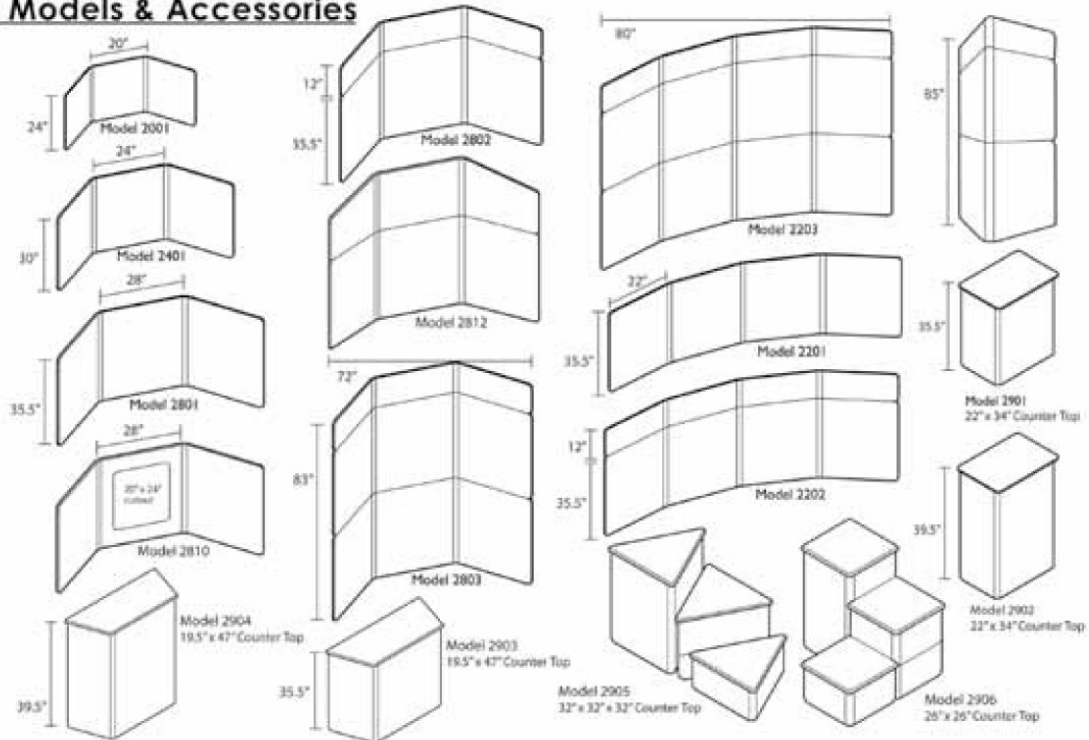
Premier - ribbed exhibit & display fabric



FOLDING DISPLAY PANELS



Models & Accessories



LINEAR



LINEAR TABLETOP KITS

- hybrid modular display systems
- quick set up
- stylish wing design options



Kit AA
LN-K-TT-AA



Kit BB
LN-K-TT-BB



Kit CC
LN-K-TT-CC



Kit DD
LN-K-DD



Kit EE
LN-K-TT-EE



Kit FF
LN-K-TT-FF



Kit GG
LN-K-TT-GG



Kit HH
LN-K-HH

TABLE THROW

- 8 foot full: TBL-T-8-F
- 6 foot full: TBL-T-6-F
- 8 foot economy: TBL-T-8-E
- 6 foot economy: TBL-T-6-E

NEW

- complete your presentation with a dye-sub printed table throw
- lends a polished appearance to any display
- maximize your advertising with additional space to display your message



shown with Horizon Standard tabletop folding panel display (see page 18)

VORT-X MINI

- 12"W 16.5"H
- red: VTX-MC
- blue: VTX-MC-BL
- black: VTX-MC-BK



- quick & simple to assemble
- ideal for retail/POP use
- sold in packs of 2



BREEZE

- 12"W 16.5"H
- BREZ-I-S

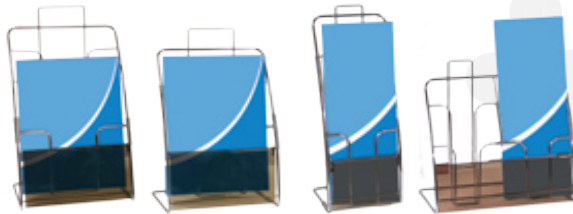


- retractable tabletop stand
- ideal for custom calendars & other promotional banners



SIGNATURE

- tabletop literature dispensers
- sold in packs of 2



SIG-1
3 pockets
8.5" x 11"

SIG-2
3 pockets
8.5" x 11"

SIG-3
3 pockets
4.25" x 11"

SIG-4
3 pockets
4.25" x 11"



TABLE ACE

- TB-ACE-3
12"w x 24"h



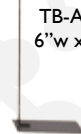
- mini tabletop banner stands
- sold in packs of 3
- black only



TB-ACE-2
6"w x 24"h



TB-ACE-1
6"w x 12"h





T 514-31ONIVO (514-316-6486)
info@onivo.ca | www.onivo.ca

ShowStyle Pro32 Features

Introducing ShowStyle Pro32

Self-Packing Tabletop Display

- 48 lbs. Net Wt.
- 14 sq. Ft. of Graphics Area
- 20W Halogen Lights Optional
- 27.5" Wide Graphics Area
- The Original ShowStyle

There's room for two Arch-Top headers to be secured on the back of the unit.

Handle retracts when display is in use.

ShowStyle Pro32 folds back into a briefcase with visual elements still in place.

Available in black, blue, silver, burgundy, royal blue, and purple velcro ready fabric.

Pro32 upgrade includes two 50w halogen lights and travel bag with storage area for the lights.